

Type C, house C1

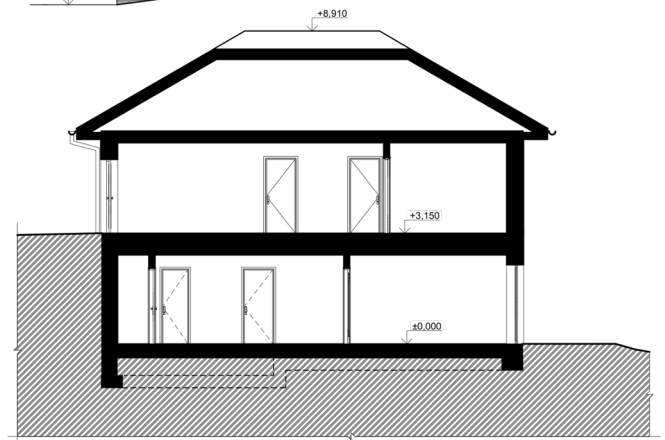
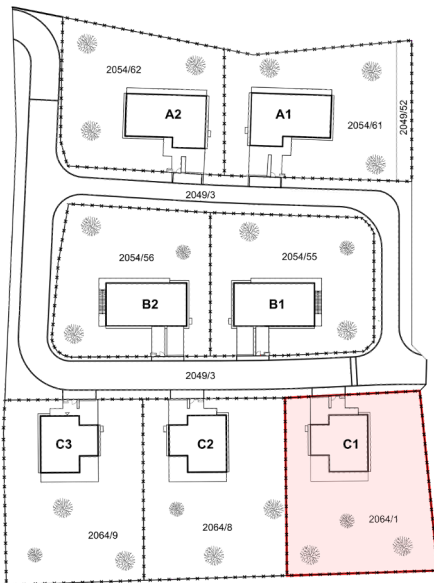
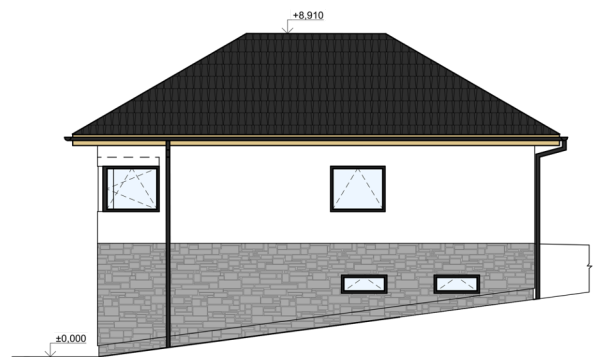
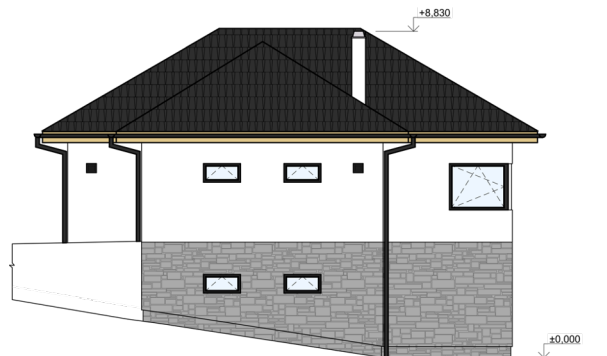
Luxurious family house with 5 separate rooms, a large living room with fireplace and a big terrace on the first floor (terrace area = 39,13 m²). The layout of the house has been carefully considered to allow each owner the opportunity to adapt the internal finishes to their own taste and needs. In this type of house it is possible to create a sauna and wellness-zone on the first floor. The family house includes a one car garage and a paved area on the front yard for parking. The family house is designed with a sloping hipped roof and consists of two floors.

The floor area is calculated in strict accordance with Government Regulation 366/2013 Sb.

House specification:

- Layout: 5+kk
- Floor area: 205 m²
- Total usable area: 231,97 m²
- Terrace: 39,13 m²
- Garage: 20,20 m²
- Garden: 932 m²
- Plot area: 1135 m²





Note: The houses are offered with the necessary connections for the installation of sanitary ware, terrace cover and sauna (in C category of houses), but the final interior design is left to the buyer's choice.