

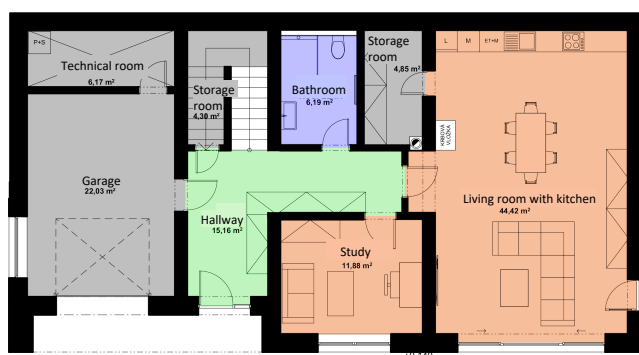
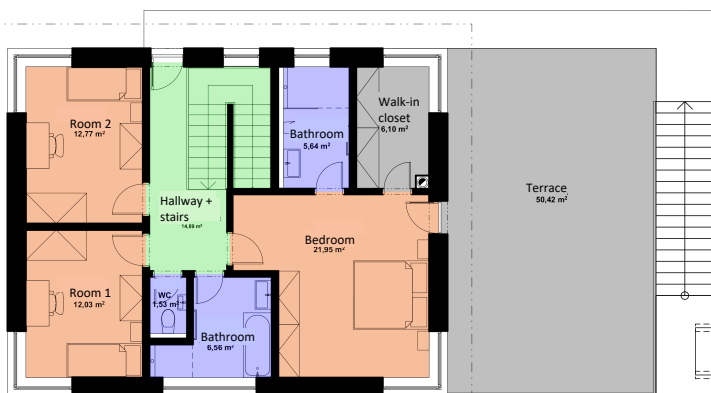
## Type B, house B1

Luxurious family house with 5 separate rooms, a large living room with fireplace and a big terrace on the first floor (terrace area = 50,42 m<sup>2</sup>). The layout of the house has been carefully considered to allow each owner the opportunity to adapt the internal finishes to their own taste and needs. The family house includes a one car garage and a paved area on the front yard for parking. The family house is designed with a sloping hipped roof and consists of two floors.

### House specification:

- Layout: 5+kk
- Floor area: 212 m<sup>2</sup>
- Total usable area: 246,89 m<sup>2</sup>
- Terrace: 50,42 m<sup>2</sup>
- Garage: 22,03 m<sup>2</sup>
- Garden: 779 m<sup>2</sup>
- Plot area: 1016 m<sup>2</sup>

The floor area is calculated in strict accordance with Government Regulation 366/2013 Sb.



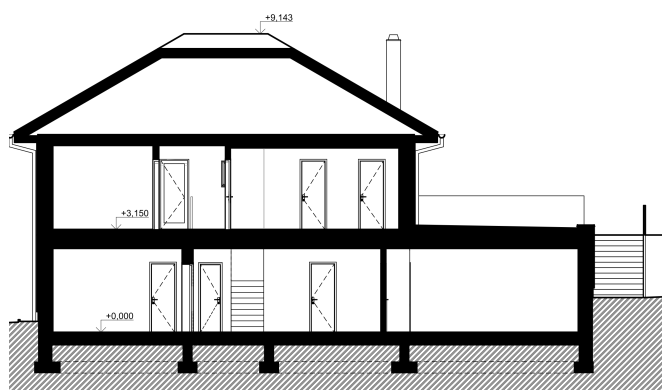
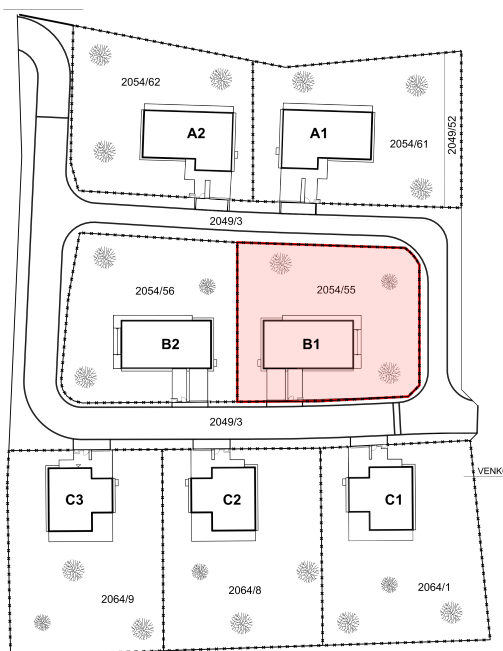
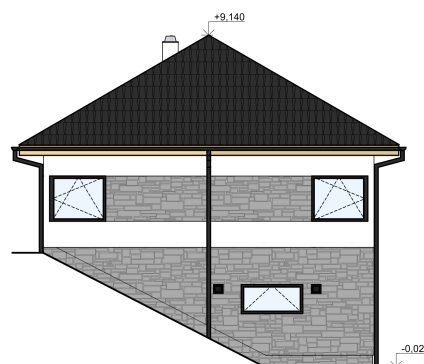
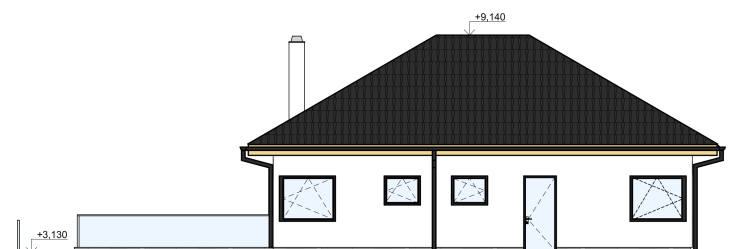


Flexible  
Investment  
Solutions

Advertising brochure

[www.rdondrejov.cz](http://www.rdondrejov.cz)

## Type B, house B1



**Note:** The houses are offered with the necessary connections for the installation of sanitary ware, terrace cover and sauna (in C category houses), but the final interior design is left to the buyer's choice.

[www.flexible-investment.com](http://www.flexible-investment.com)