

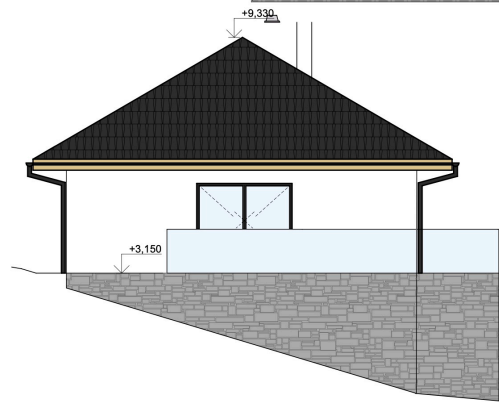
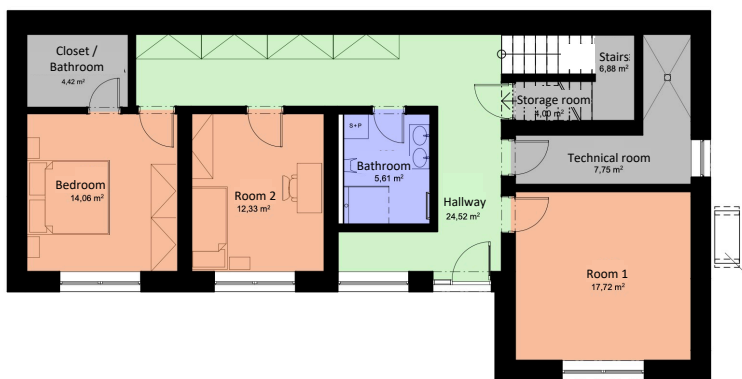
Type A, house A 2

Luxurious family house with 6 rooms, a large living room with the fireplace and two large terraces on the second floor. Houses in this category offer the option to build a covered terrace (pergola) according to the client's preferences. The layout of the house has been carefully considered to allow each owner the opportunity to adapt the internal finishes to their own taste and needs. The family house will include a paved area, intended as a parking space. Above this area, it is possible to build a shelter (pergola) at the client's request. The family house is designed with a sloping hipped roof and consists of two floors.

House specification:

- Layout: 6+kk
- Floor area: 194,67 m²
- Total usable area: 246,42 m²
- Terrace 1: 16,10 m²
- Terrace 2: 37 m²
- Garden: 771,28 m²
- Plot area: 1003 m²

The floor area is calculated in strict accordance with Government Regulation 366/2013 Sb.



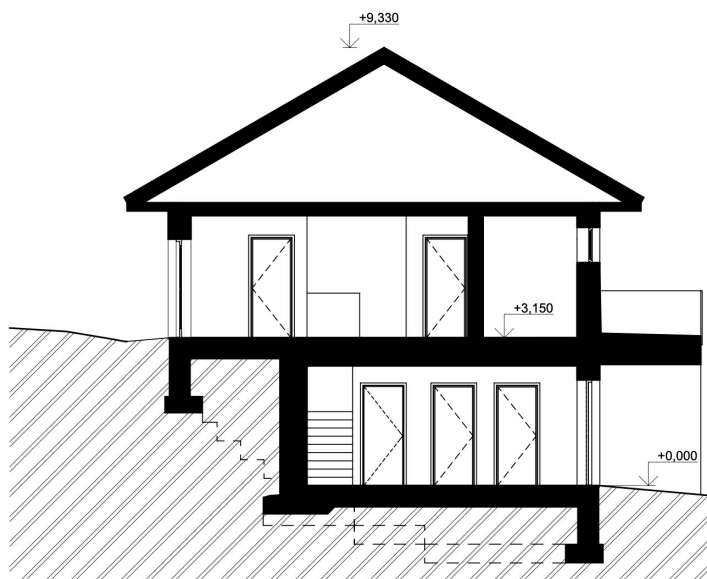
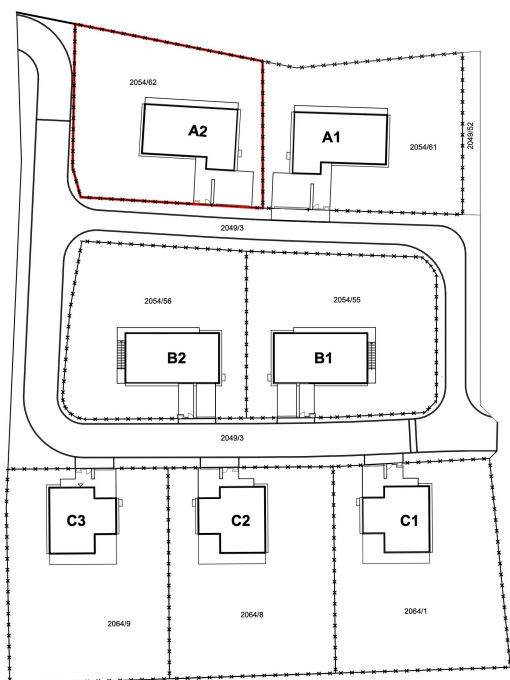
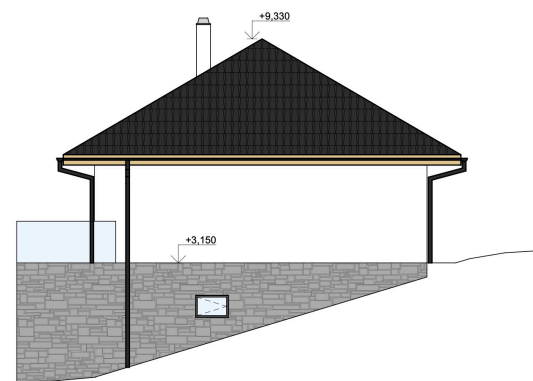
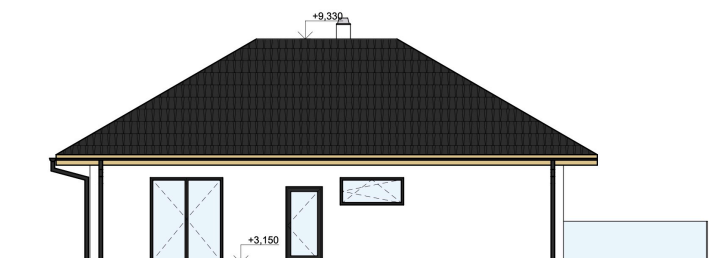


Flexible
Investment
Solutions

Advertising brochure

www.rdondrejov.cz

Type A, house A 2



Note: The houses are offered with the necessary connections for the installation of sanitary ware, terrace cover and sauna (in C category houses), but the final interior design is left to the buyer's choice.

www.flexible-investment.com